



Stage Referenti Regionali Self Crono

Bologna - 22-23/10/2022

Stefano Dalla Costa

I sistemi FinishLynx

aggiornamento tecnologico e nuove funzionalità

Agenda

1. Lynx Products
2. FinishLynx Software
3. Network topology



Lynx Products

- EtherLynx Vision
- IdentiLynx+
- Lens Mount
- Lens and Scan Rate Calculator
- Remote Camera Positioner
- Lynx Ultrasonic Wind Gauge
- SerialLynx Serial-to-Ethernet Adapter
- RadioLynx (MF)



Lynx Products

- **EtherLynx Vision**

- EtherLynx Vision (5L500)
- (y2014)
- 1280 pixels @ 2000 fps (up to 20000 fps)
- 2-D Video Alignment mode
- CS-Mount lens
- Poe
- Options
 - Wi-Fi (Wireless)
 - Internal Battery Backup
 - PLC



- Links

- <https://finishlynx.com/product/cameras/etherlynx-vision-photo-finish-camera>



Lynx Products

- **IdentiLynx+**

- Replaced the standard IdentiLynx (IDL-511) in May 2018
- 1280x720@30 fps (vs IDL-511 1024x768 @15 fps)
- P-Iris motorized lens so the zoom and focus can be adjusted remotely

- Troubleshooting

- Error 129 Failed Contact Address
 - Disable Wireless

- Links

- <https://finishlynx.com/product/cameras/identilyn-plus-video-camera>
- https://finishlynx.com/wp-content/uploads/2012/08/IdentiLynx_Troubleshooting.pdf



Lynx Products

- **IdentiLynx vs Identynx+**

CAMERA HARDWARE SPECIFICATIONS:

Max Resolution:	1024 x 768
Max Frame Rate:	15 frames/sec
Adjustable Shutter Speed:	Adjustable to 1/10000th
JPEG image quality	Adjustable
Gain	Automatic
Lens	5-50mm f/1.3 Manual Zoom Lens
Power Supply:	12VDC or 802.3af Power Over Ethernet
Dimensions (w/o lens)	74 H x 88 E x 42 D mm ~ 2.9" H x 3.5" W x 1.7" D
Weight (w/o lens)	0.240 Kg ~ 9 oz

IdentiLynx+ Hardware Specifications

Shutter Speed	Automatic
JPEG image quality	Up to 5 megapixels
Gain	Automatic
Lens	2.8-8.5mm, f/1.2, Motorized Zoom Lens
Power Supply	Power-Over-Ethernet (PoE 802.3af); 12VDC; 24 VAC
Dimensions	5.07" (L) x 2.72" (W) x 2.76" (H)
Weight	0.4 lb (0.165 kg)
Construction	Plastic and aluminum



- **Links**



Lynx Products

- IdentiLynx models comparison

	IDENTILYNX CAMERA	IDENTILYNX PRO CAMERA
		
COMPARISON: IDENTILYNX VS. IDENTILYNX PRO		
Model	IdentiLynx	IdentiLynx PRO
Max. Resolution:	1280 x 1024 @ 15 fps (1.3 Megapixels)	2560 x 1920 at 5 fps (4.9 Megapixels)
Max. Frame Rate:	30 fps (at 760 x 608)	60 fps (at 640 x 480)
@ 15 Frames/Sec:	1280 x 1024	1600 x 1200
@ 20 Frames/Sec:	1000 x 800	1280 x 960
@ 30 Frames/Sec:	760 x 608	1024 x 768

IdentiLynx Model	IdentiLynx+	IdentiLynx XR+
		
Max Resolution	1280 x 720 @ 30 fps	2592 x 1944 @ 15 fps
Max Frame Rate	30 fps (1280 x 720)	30 fps @ 1920 x 1080
Resolution 1	n/a	2592 x 1944 @ 15 fps
Resolution 2	n/a	2560 x 1440 @ 15fps
Resolution 3	n/a	2048 x 1536 @ 20 fps
Resolution 4	n/a	1920 x 1080 @ 30 fps
Resolution 5	n/a	1600 x 1200 @ 20 fps
Resolution 6	n/a	1280 x 960 @ 20 fps
Resolution 7	1280 x 720 @ 30 fps	1280 x 720 @ 30 fps
Resolution 8	720 x 480 @ 30 fps	720 x 480 @ 30 fps
Resolution 9	320 x 240 @ 30 fps	320 x 240 @ 30 fps

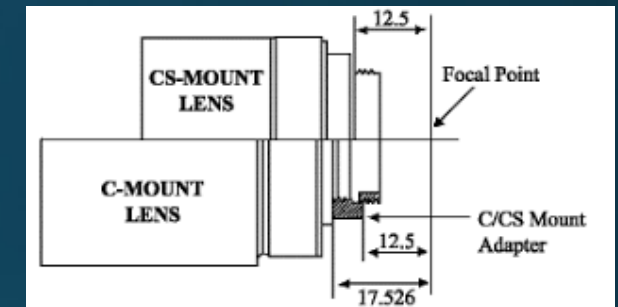
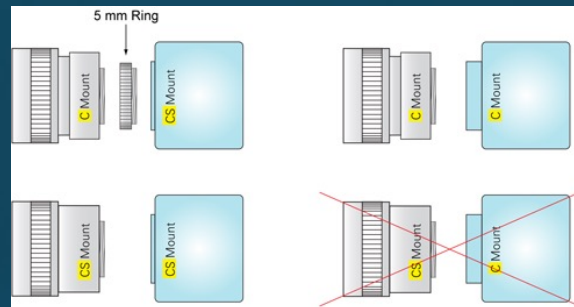
- Links



Lynx Products

• Lens Mount

- C-Mount lens vs CS-Mount lens
 - Same screw thread
 - CS to C-Mount Adapter (5mm)



Camera	Vision PRO	Vision	EtherLynx 2000	EtherLynx Fusion	EtherLynx PRO
Camera's Lens Mount Format	CS	CS	C	C	C
C-Mount Lenses		Is the CS- to C-Mount Adapter Needed?			
25mm (V2513)	Yes	Yes	No	No	No
12.5-75mm (155 & C1275M)	Yes	Yes	No	No	No
8-48mm (C848 & C848M)	Yes	Yes	No	No	No
CS-Mount Lenses		Is the CS- to C-Mount Adapter Needed?			
6mm (CS-612)	No	No	Not Compatible	Not Compatible	Not Compatible
2.8-10mm (CS2810P)	No	No	Not Compatible	Not Compatible	Not Compatible
5-50mm (IDL-CS5-50 f1.3)	No	No	Not Compatible	Not Compatible	Not Compatible

www.finishlynx.com support@finishlynx.com

Do not use the CS-C Mount Adapter with CS-Mount lenses. Mount this lens directly to the camera.



• Links

- https://finishlynx.com/wp-content/uploads/2012/08/CS-C_Mount_Lenses.pdf



Lynx Products

- Lens and Scan Rate Calculator

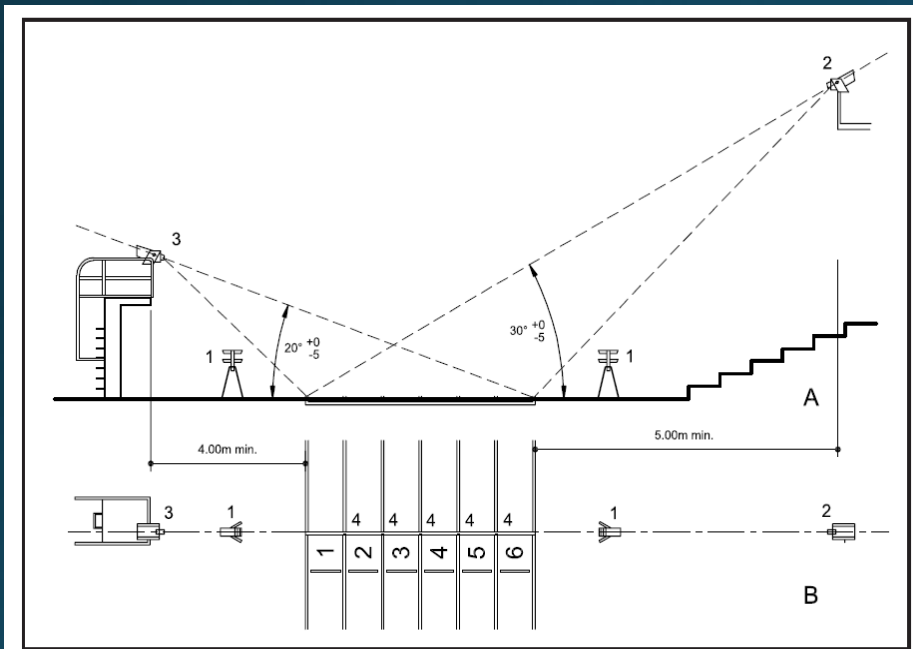
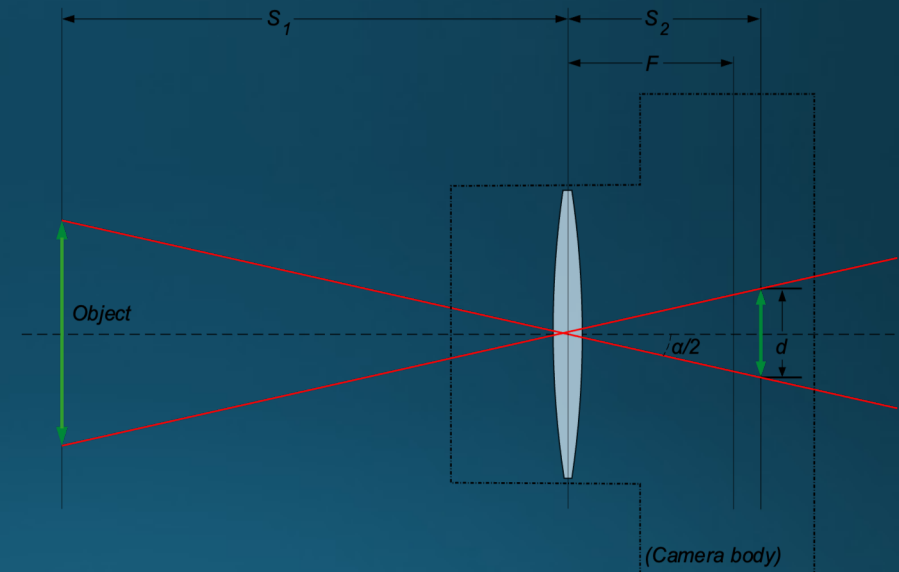


Figure 8.4.2.2 - Timing installations in a track and field hall

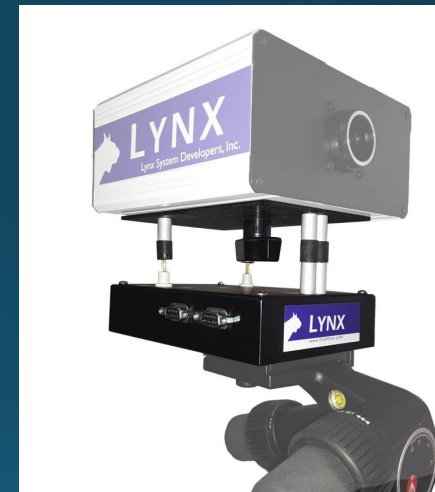
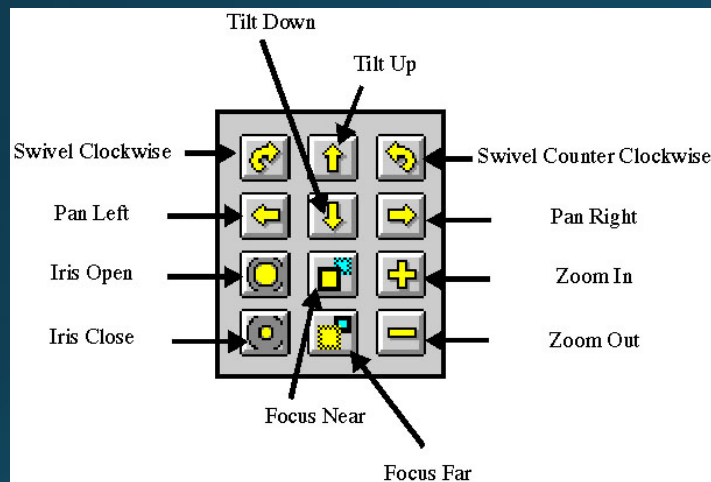


- Links

- <https://finishlynx.com/wp-content/uploads/2012/08/LensCalc21-3.xlsx>

Lynx Products

- Remote Camera Positioner



- Links

- <https://finishlynx.com/product/camera-mountings/remote-camera-positioner>



Lynx Products

- **Lynx Ultrasonic Wind Gauge**

- Serial Connection RS232
- Connection box DC power supply
- Solid-State – No Moving Parts - Maintenance-Free
- Weatherproof & Corrosion-Free Materials



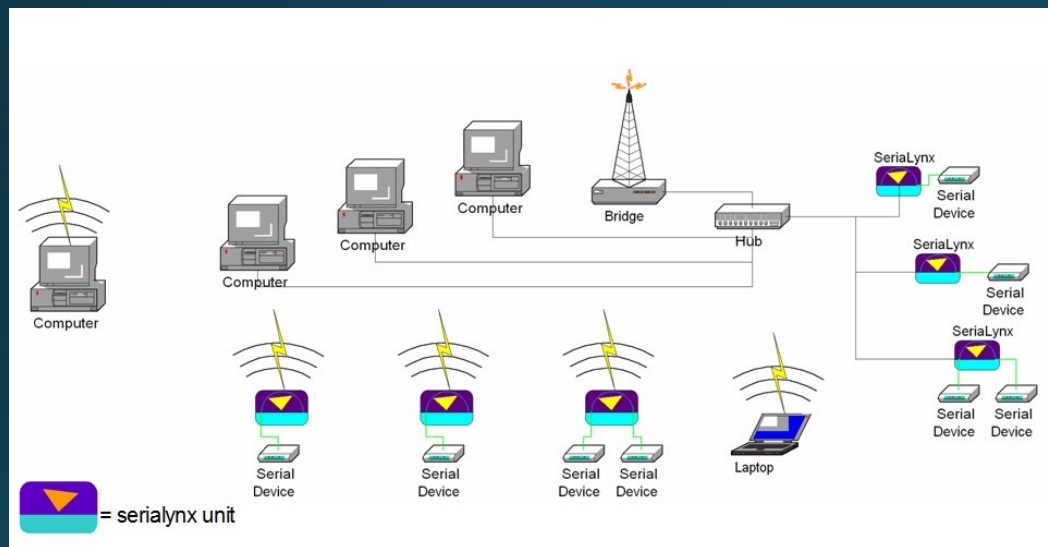
- Links

- <https://finishlynx.com/product/accessories/ultrasonic-wind-gauge/>



Lynx Products

- SerialLynx Serial-to-Ethernet Adapter



- links

- <https://finishlynx.com/product/networking-hardware/seriallynx-serial-to-ethernet-adapter>
- <https://finishlynx.com/product/finishlynx-plugins/network-com-port>



Lynx Products

- RadioLynx (LinkGate)

- Repeat button
- MF multi frequency vs single frequency
- Modem mode
- Two are better than one



- <https://finishlynx.com/product/accessories-start/radiolynx-wireless-start>
- https://timing.microgate.it/sites/default/files/manuali/ENCRADIO_DECRADIO-Manuale di Riferimento 2 0 IT.pdf



Lynx Products

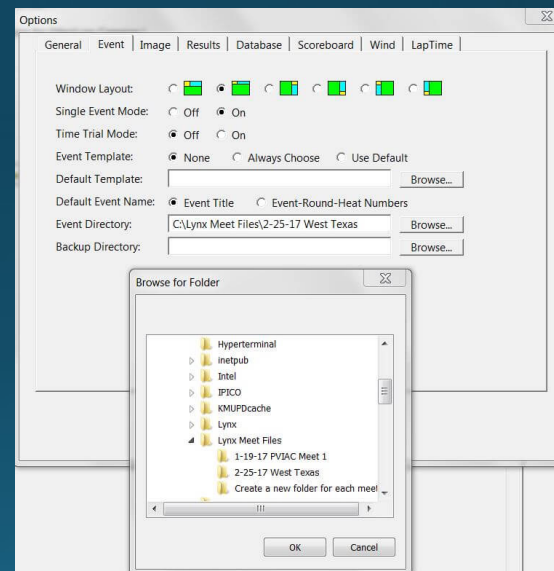
- RadioLynx (LinkGate)
 - Gun Sensor



FinishLynx Software

- **FinishLynx File and Directory Best Practices**

- Event Directory (local folder)
- Backup Directory (shared folder/ext drive)



- **links**

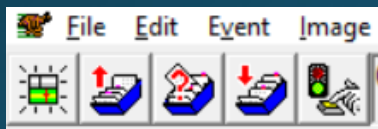
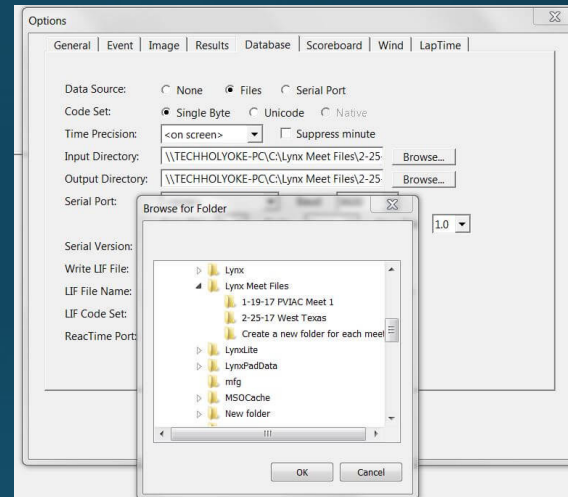
<https://finishlynx.com/file-directory-best-practices>



FinishLynx Software

- **FinishLynx and SIGMA interconnection**

- Database
 - Input (.evt, .sch) (shared folder)
 - Output (.lif) (shared folder)
- Schedule
- Schedule in the current event



Place	Id	Lane	First Name	Last Name	Affiliation
17	2		SOFIA	ZAMBON	ATLETICA VILLORBA
4	3		GIORGIA	CAMILLO	GRUPPO ATLETICA VEDELAGO
7	4		BIANCA	FILIPPINI	ATL. BALDO-GARDA CAPRINO V.S
15	5		ISABELLA	CALZOLARI	TREVISATLETICA
6	6		ANGELA	DE PRA	ATHLETIC CLUB FIREX BELLUNO

- **links**

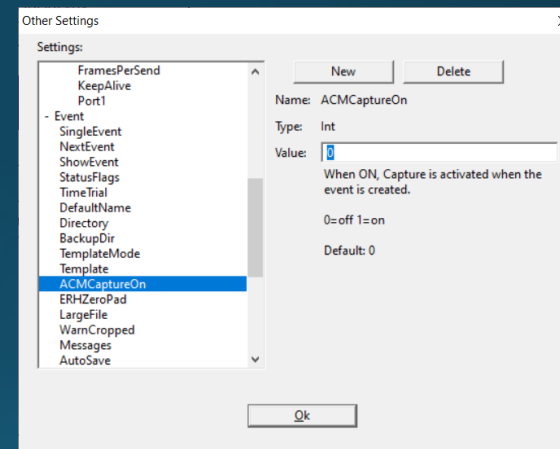
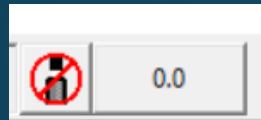
<https://finishlynx.com/file-formats-meet-manager>



FinishLynx Software

- How do I access FinishLynx hidden settings?

- SHIFT + CTRL
- Enable capture button



- links

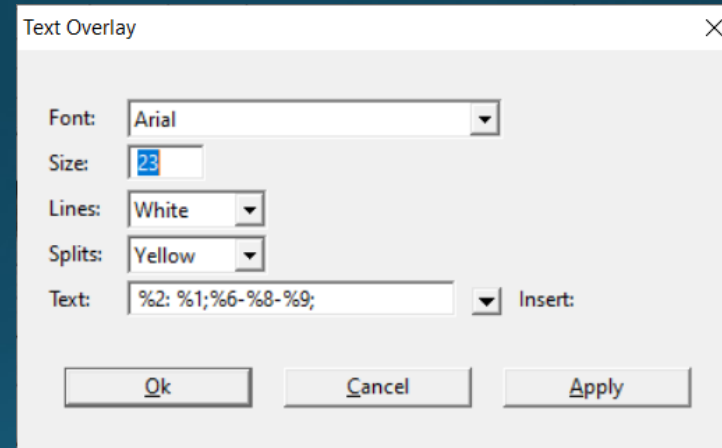


<https://finishlynx.com/faq>

FinishLynx Software

- **Overlay/line labels**

- Menu Image/overlay/line labels (ALT+N)



;	New Line
%1	Line Time
%2	Split Number
%3	LapTimer Name
%4	Place
%5	Id
%6	Lane
%7	First Name
%8	Last Name
%9	Affiliation
%10	License
%11	User 1
%12	User 2
%13	User 3
%14	Time
%15	Delta Time
%16	Delta Time 2
%17	Delta Time 3
%18	ReacTime
%19	Cum. Split Time
%20	Last Split Time
%21	Best Split Time
%22	Laps
%23	Speed
%24	Pace

- **Links**

- <https://help.finishlynx.com/Content/OnlineManual/OverLays.htm>
- <https://finishlynx.com/finishlynx-laptime-cross-country-results>



FinishLynx Software

- `uGraphLED_2wideX2lines_Wind.lss`

- Links

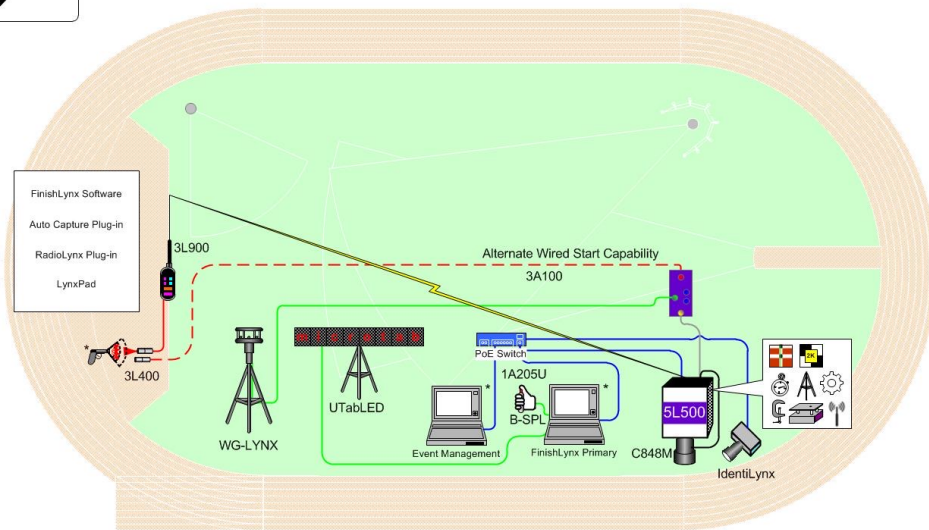
- <https://finishlynx.com/support/display-and-scoreboard-scripts/>



Lynx network topology



Athletics – Championship

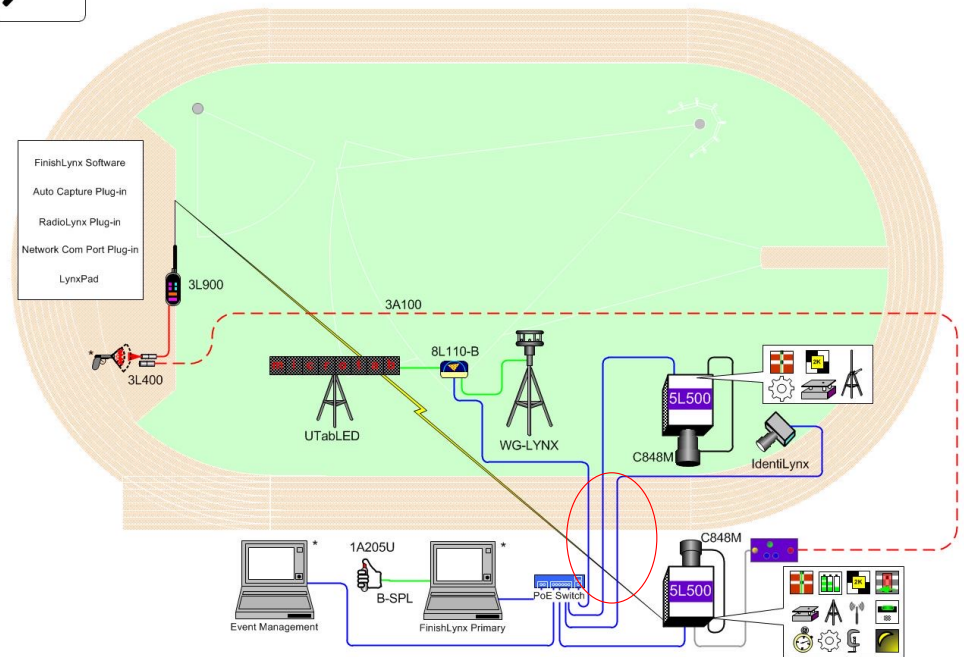


* Computers and starting pistol not included in package

© 1992 – 2022 | Lynx System Developers, Inc. | www.finishlynx.com



Athletics – Championship Elite



* Computers and starting pistol not included in package

© 1992 – 2022 | Lynx System Developers, Inc. | www.finishlynx.com



Stage Referenti Regionali Self Crono - Bologna - 22-23/10/2022

Lynx network topology

